



DSF-42BCS00

INSTALLATION INSTRUCTIONS



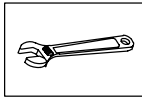
Notes before installation:

1. Please check that all components are present.
2. Before installation ensure that all feed lines are clear of debris and on/off valve is present.
3. Ensure water pressure is between 20-125 PSI (Includes combination of hot and cold feed lines).
4. Pictures in the manual are general in content and may not represent exactly your purchased faucet. If you are having difficulties please contact a professional plumber.
5. If you will be away from home for an extended period you should shut off the main water supply.

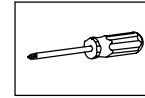
Daily maintenance

1. Use a soft cloth and vinegar to remove hard-water spots.
2. Check aerator (if present) regularly for calcium build up or when water stream is not optimum.
3. DO NOT use caustic cleaning products as the use will break down finish and will void the product warranty.
4. Acceptable cleaners include vinegar or mild non-abrasive liquid detergents.
5. If the water pressure appears to be less than optimum remove, inspect, clean or replace aerator.

Tools you will need:



Adjustable Wrench

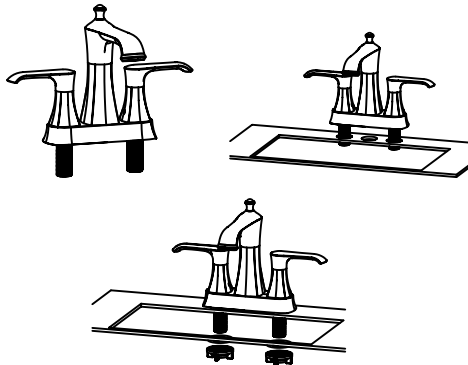


Philips Screwdriver

1. Turn off water supply at valves or main.

2. Position faucet on the sink. From underneath the sink, secure faucet with mounting nuts. Hand tighten nuts, check faucet position, then tighten.

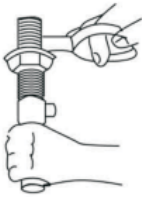
3. Apply teflon tape or pipe thread compound to male faucet threads. Attach water supply lines to faucet and valves.



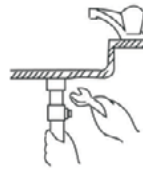
4. Install pop-up assembly.

5. Make sure all connections are tight, and turn on water supply.

6. Unscrew and remove aerator. turn water on and check for leaks. Run hot and cold water uninterrupted for about 1 minute to remove any residue from the lines. Replace the aerator.



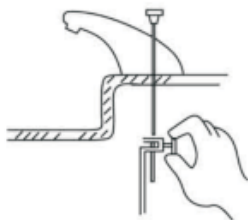
A. Thread mounting nut and bottom gasket onto drain body. Wrap top threaded end of the drain body with teflon tape.



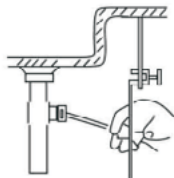
B. Insert drain body up through the drain opening. Add screw seat onto drain body. Hold the drain body with pivot rod opening facing the back of the sink. Hand tighten the mounting nut. Insert pop-up stopper.



C. Place pivot rod in proper opening. Slide pivot nut onto drain body. Tighten firmly, but DO NOT OVER-TIGHTEN.



D. With lift rod in position in the faucet. Insert lift rod through lift rod strap and secure with set screw.



E. Guide the pivot rod through any hole on the lift rod strap and secure it with the spring clip. Adjust the height of the lift rod by resetting the set screw