



DSF-42BVE00

INSTALLATION INSTRUCTIONS



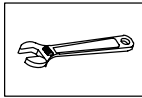
Notes before installation:

1. Please check that all components are present.
2. Before installation ensure that all feed lines are clear of debris and on/off valve is present.
3. Ensure water pressure is between 20-125 PSI (Includes combination of hot and cold feed lines).
4. Pictures in the manual are general in content and may not represent exactly your purchased faucet. If you are having difficulties please contact a professional plumber.
5. If you will be away from home for an extended period you should shut off the main water supply.

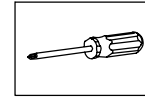
Daily maintenance

1. Use a soft cloth and vinegar to remove hard-water spots.
2. Check aerator (if present) regularly for calcium build up or when water stream is not optimum.
3. DO NOT use caustic cleaning products as the use will break down finish and will void the product warranty.
4. Acceptable cleaners include vinegar or mild non-abrasive liquid detergents.
5. If the water pressure appears to be less than optimum remove, inspect, clean or replace aerator.

Tools you will need:



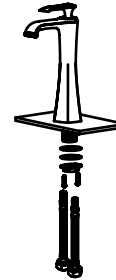
Adjustable Wrench



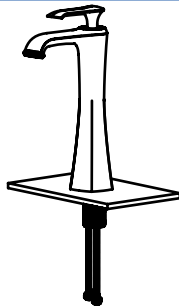
Phillips Screwdriver



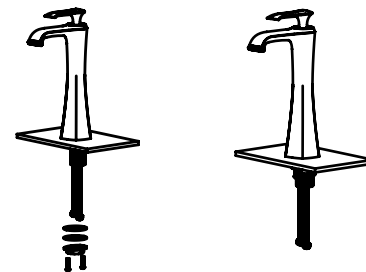
1. Remove the rubber washer, metal washer and lock nut from the faucet.



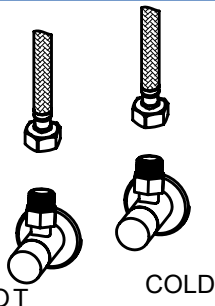
2. Screw and hand tighten the hot and cold flexible hoses to the faucet. DO NOT use a wrench to tighten hoses, as this may damage the hose and/or hose threads



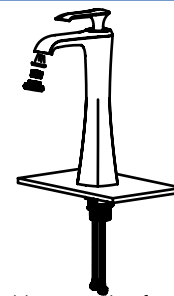
3. Install faucet through center hole.



4. Reinstall the rubber washer, followed by the metal washer and lock nut. Hand tighten, then tighten further using a screw driver to tighten the lock nut.



5. Attach flexible hose to the water supply.



6. Remove the aerator and turn on the faucet for 1 minute to flush debris from faucet and feed lines. Turn faucet off and reassemble aerator.